



# The Kavery Engineering College

Mecheri, Salem Dt, Tamilnadu- 636 453.

(Approved by AICTE, New Delhi & Affiliated to Anna University)

An ISO 9001:2015 certified Institution and accredited by NAAC with A+ grade.



## CRITERION II-TEACHING-LEARNING AND EVALUATION

### 2.7.1 STUDENT SATISFACTION SURVEY

For the NAAC AQAR (2023-2024), Students Satisfaction Survey (SSS) was conducted among the students of the college through the college website. The questionnaire has been framed based on NAAC guidelines. Students have rated the question in a **scale of 0 to 4**. The result of this survey is based on the response of 1827 students. The summary is displayed on the college website and it is also presented in the IQAC meeting.

Number of responses received for the (SSS) survey= **1827**

Average grade: **3.881**

S. NO	QUESTIONNAIRE	SCORE 23-24
1	How much of the syllabus was covered in the class?	3.927
2	How well did the teachers prepare for the classes?	3.863
3	How well were the teachers able to communicate?	3.881
4	The teacher's approach to teaching can best be described as	3.951
5	Fairness of the internal evaluation process by the teachers.	3.837
6	Was your performance in assignments discussed with you?	3.825



# The Kavery Engineering College

Mecheri, Salem Dt, Tamilnadu- 636 453.

(Approved by AICTE, New Delhi & Affiliated to Anna University)

An ISO 9001:2015 certified Institution and accredited by NAAC with A+ grade.



S. NO	QUESTIONNAIRE	SCORE 23-24
7	The institute takes active interest in promoting internship, student exchange, field visit opportunities for students.	3.866
8	The teaching and mentoring process in your institution facilitates you in cognitive, social and emotional growth.	3.834
9	The institution provides multiple opportunities to learn and grow.	3.825
10	Teachers inform you about your expected competencies, course outcomes and programme outcomes.	3.826
11	Your mentor does a necessary follow-up with an assigned task to you.	3.941
12	The teachers illustrate the concepts through examples and applications.	3.838
13	The teachers identify your strengths and encourage you with providing right level of challenges.	3.875
14	Teachers are able to identify your weaknesses and help you to overcome them.	3.928
15	The institution makes effort to engage students in the monitoring, review and continuous quality improvement of the teaching learning process.	3.874
16	The institute/ teachers use student centric methods, such as experiential learning, participative learning and problem solving Methodologies for enhancing learning experiences.	3.913
17	Teachers encourage you to participate in extracurricular activities.	3.921
18	Efforts are made by the institute/ teachers to inculcate soft skills, life skills and employability skills to make you ready for the World of work.	3.859
19	What percentage of teachers use ICT tools such as LCD projector, Multimedia, etc. while teaching.	3.849
20	The overall quality of teaching-learning process in your institute is very good.	3.987



# The Kavery Engineering College

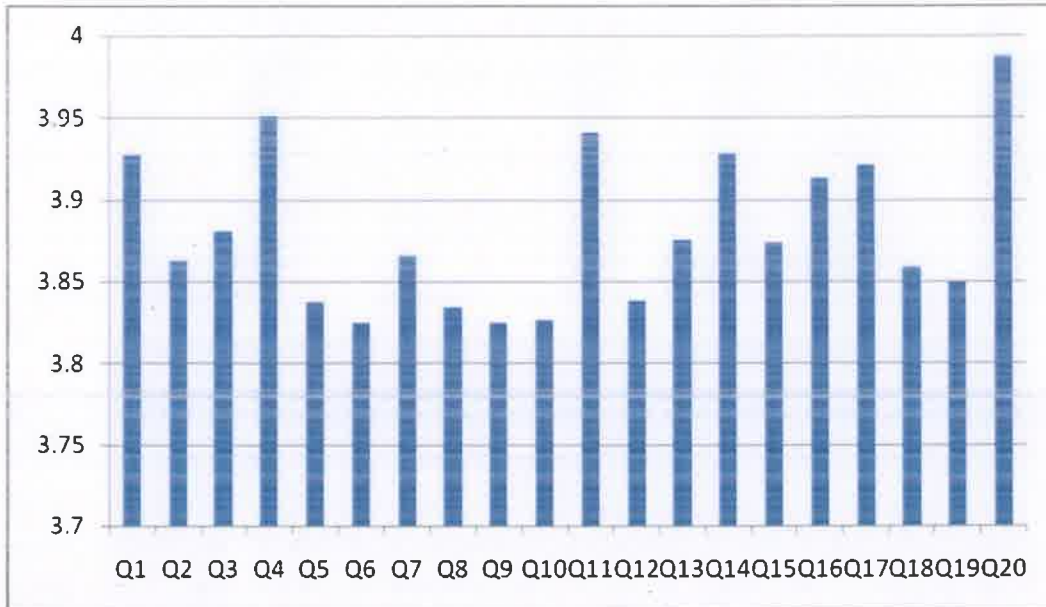
Mecheri, Salem Dt, Tamilnadu- 636 453.

(Approved by AICTE, New Delhi & Affiliated to Anna University)

An ISO 9001:2015 certified Institution and accredited by NAAC with A+ grade.



## STUDENT'S SATISFACTION SURVEY 2023-2024



  
Prof. Dr. V. Duraisamy, M.E., Ph.D., FIE  
PRINCIPAL  
The Kavery Engineering College  
Mecheri, Salem - 636 453.